



Innovation
that excites

2015 LEAF®

Zero Emission

WELCOME TO THE 2015 100% ELECTRIC NISSAN LEAF® DIGITAL BROCHURE

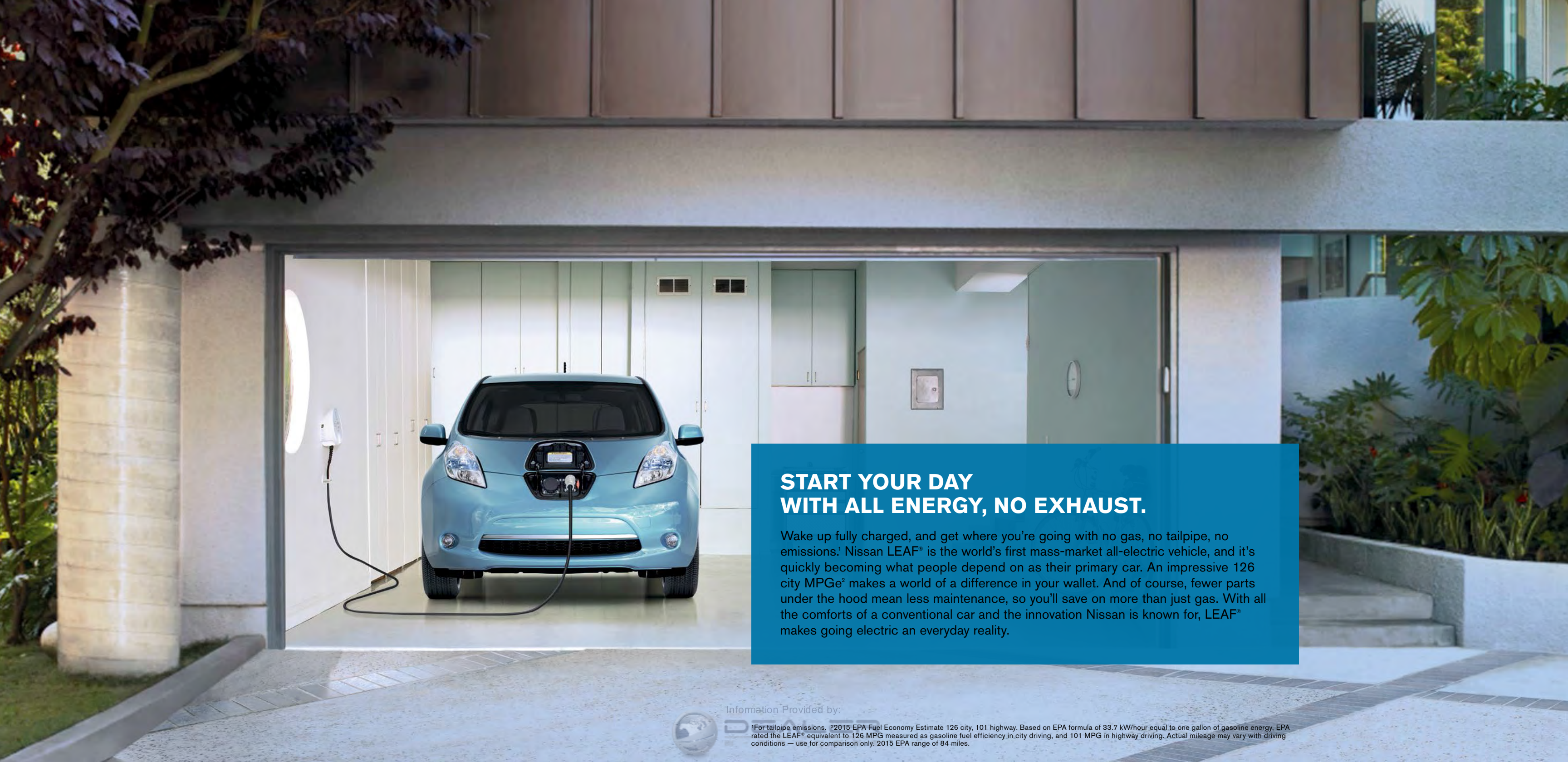
Full of images, feature stories, and all the specification, trim level
and charging information you need to help select your 100% electric LEAF.®

[Click here](#) to sign up for news and updates on the 2015 Nissan LEAF.®



Information Provided by:

DEALER
E-PROCESS



START YOUR DAY WITH ALL ENERGY, NO EXHAUST.

Wake up fully charged, and get where you're going with no gas, no tailpipe, no emissions.¹ Nissan LEAF[®] is the world's first mass-market all-electric vehicle, and it's quickly becoming what people depend on as their primary car. An impressive 126 city MPG^{e2} makes a world of a difference in your wallet. And of course, fewer parts under the hood mean less maintenance, so you'll save on more than just gas. With all the comforts of a conventional car and the innovation Nissan is known for, LEAF[®] makes going electric an everyday reality.

Information Provided by:



¹For tailpipe emissions. ²2015 EPA Fuel Economy Estimate 126 city, 101 highway. Based on EPA formula of 33.7 kW/hour equal to one gallon of gasoline energy, EPA rated the LEAF[®] equivalent to 126 MPG measured as gasoline fuel efficiency in city driving, and 101 MPG in highway driving. Actual mileage may vary with driving conditions — use for comparison only. 2015 EPA range of 84 miles.



PEOPLE EVERYWHERE ARE TALKING ABOUT THE LEAF.®

Over 50,000 drivers across the country have made LEAF® part of their daily lives. And the love for LEAF® has gone global. In fact, it's the best-selling electric car in the world, with over 115,000 global owners and over 840 million gas-free miles driven. Get your questions answered by real LEAF® owners at bit.ly/faqleaf15



“Saving on gas money and putting it to my child’s college fund is a much better use of my money.”

WARREN R, WA



“Comfortable for my family of four. It’s big enough for all of us.”

DAVID M, FL



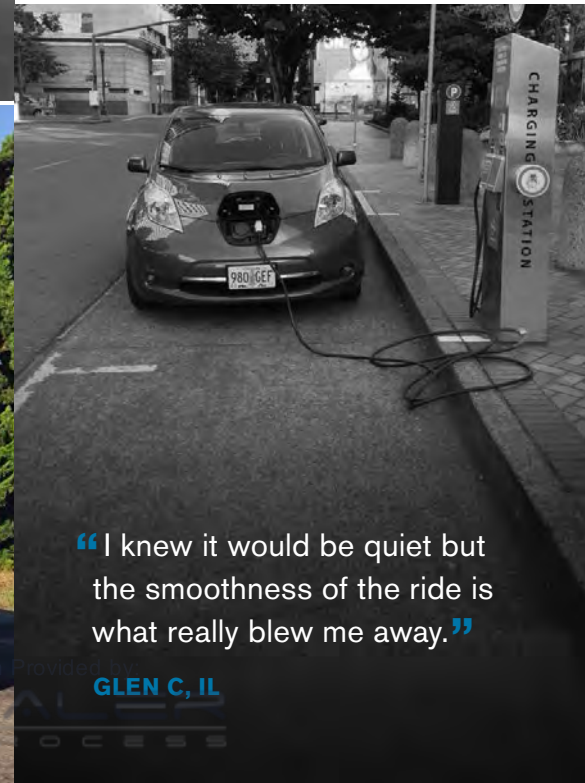
“This thing is a blast to drive. The power is amazing.”

CRAIG U



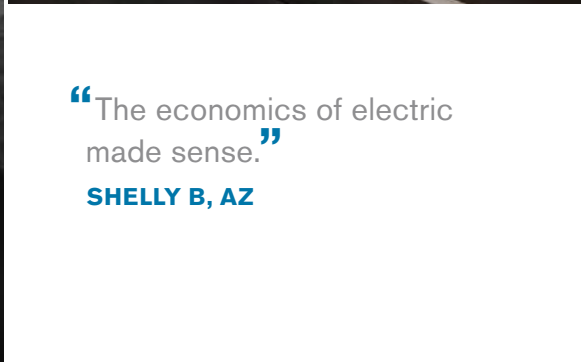
“...when I’m teaching my kids how to drive, I can tell them, ‘This car you’re driving is one of the first electric cars ever sold in America.’”

ALEX W



“I knew it would be quiet but the smoothness of the ride is what really blew me away.”

GLEN C, IL



“The economics of electric made sense.”

SHELLY B, AZ

“...laughing as I drive by gas station signs is fun.”

JOHN B, MN

**REMEMBER WHEN DRIVING FELT
EXCITING AND NEW?**

WELCOME BACK.

100% torque off the line and seamless acceleration bring a fun, new kick to your everyday to-do list. The LEAF®'s low center of gravity means curve-hugging and easy control in the driver's seat. Whether you're on the freeway, running errands or taking the long way home, getting into your Nissan LEAF® will become one of your favorite parts of the day.



Nissan LEAF® SL shown in Pearl White.

SAY HELLO TO YOUR FILLING STATION.

"Fill up" at home and you're good to go for 84 miles.¹
All you have to do is plug it in like your laptop or mobile phone.

For charging, you've got options:

Normal Charge:

Your home charging dock will be your primary charging station, but you may also be able to charge at work and public stations. With the 240-volt home charging dock, LEAF[®] SV and SL charge in as little as 5 hours, while the S trim charges in about 8 hours – or in as little as 5 with the available S Charge Package.²

Quick Charge:

This available feature allows you to plug in at a DC fast-charge station, and reach 80% charge in about 30 minutes.² Ideal for when you're out and about and want to top off your charge.

Opportunity Charge:

Nissan LEAF[®] comes with a 110/120-V opportunity-charge cable. Although the rate of charging is slow, this allows you to access charging anywhere there is a suitable outlet.³

Public Charge Availability:

We're working with government and private companies to develop a wide public charging network. Approximately 20,000 public charging stations will be in place by 2015.⁴

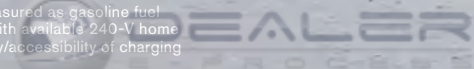


Click this link
<http://Nissan.chargepointportal.net/external/nissanmap/>
to find a ChargePoint[®] station near you.⁴



Click the button to see a short video on how to get your home charging dock installed.
Or go to bit.ly/leafdock15

Information Provided by:



¹2015 EPA Fuel Economy Estimate 126 city, 101 highway. Based on EPA formula of 33.7 kW/hour equal to one gallon of gasoline energy, EPA rated the LEAF[®] equivalent to 126 MPG measured as gasoline fuel efficiency in city driving, and 101 MPG in highway driving. Actual mileage may vary with driving conditions — use for comparison only. 2015 EPA range of 84 miles. ²Approximate time, with available 240-V home charging dock, purchased separately. ³Use only a 110-120 volt, 15 amp dedicated outlet for charging. ⁴ChargePoint[®] charging network is a third party not within Nissan's control. Availability/accessibility of charging stations is not guaranteed.

EFFICIENCY, CELEBRATED.

Packing power.

LEAF®'s compact lithium-ion battery is twice as powerful and half the weight of nickel-metal hydride batteries used in traditional hybrid cars. Its arrangement in the floor of the vehicle means interior roominess and plenty of cargo space.¹

Generate energy while you drive.

Every time you slow down, the regenerative braking system stores that energy in the Nissan LEAF® battery. That means your car charges anytime you brake. Get enhanced regenerative braking by switching to B mode.

Never be a drag.

LEAF® is aerodynamically designed to keep wind resistance down and efficiency up. And a drag coefficient of 0.28 is something to celebrate. Low-resistance rolling tires also come standard, and reduce the vehicle's energy output.

It's easy to see the bright side.

Available LED low-beam headlights use half as much energy as traditional headlights. Plus, they're aerodynamically designed to maximize efficiency.

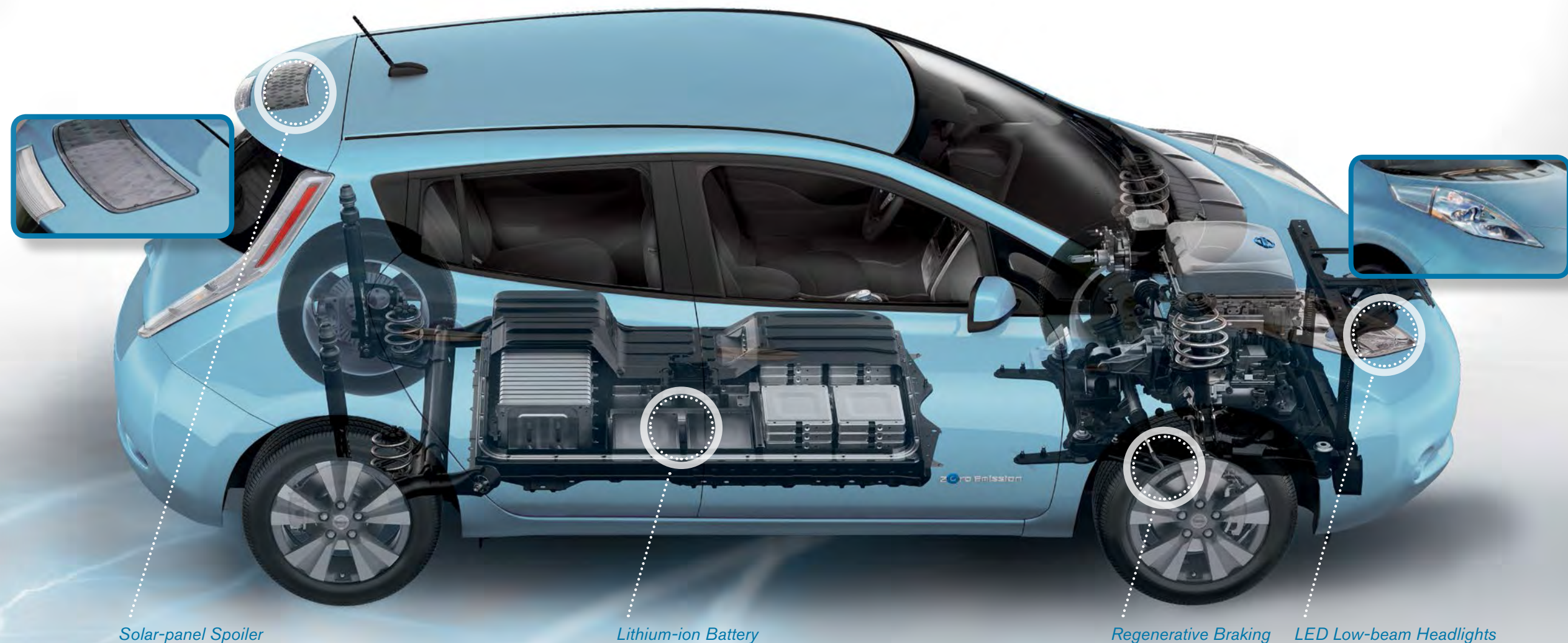
How does a solar-powered radio sound?

Like music to your ears. The photovoltaic solar-panel spoiler (SL trim only) converts sunlight into energy. It helps power your A/C, your 12-volt outlet and your stereo.

BATTERY LIMITED WARRANTY²

100,000 MILES
8 YEARS

The comprehensive Nissan LEAF® lithium-ion battery limited warranty also protects against capacity loss below 9 bars of capacity (out of 12) as shown on the LEAF®'s capacity gauge for a period of 5 years/60,000 miles (whichever occurs first).²



Solar-panel Spoiler

Lithium-ion Battery

Regenerative Braking

LED Low-beam Headlights

Information Provided by:



¹Cargo and load capacity limited by weight and distribution. Always secure all cargo. ²The limited Nissan LEAF® lithium-ion battery warranty includes coverage for defects in materials or workmanship for 8 years/100,000 miles (whichever occurs first) as well as protection against capacity loss below 9 bars of capacity (out of 12) as shown on the LEAF®'s capacity gauge for a period of 5 years/60,000 miles (whichever occurs first).

A FULL DAY ON A FULL CHARGE.

On average, Americans drive less than 33 miles a day.¹ Nissan LEAF[®] gets you 2 1/2 times that on a single charge,² which means you have the range confidence to take on the day. Just plug it in overnight, and in the morning you'll be ready to go.



8am Fully charged.
Start off comfy with available remote climate control activation (a great way to help extend range).



8:30am Drop the kids off.
Plenty of room with seating for five.



9am Arrive at work.
Single-occupancy carpool access is always a perk.⁴ Zoom ahead with instant torque.



5:30pm Errand time on Eco Mode.
Get to-do list done as efficiently as possible. Stop-and-go traffic is your friend with regenerative braking.



7pm Family night out.
You've still got range – grab the kids and head out.



9pm Home, sweet home.
Rest easy with scheduled off-peak charging.

Check out your savings in gas.
At this rate, you might start a whole new savings account.

AVG. SAVINGS \$9.30	AVG. SAVINGS \$62.25	AVG. SAVINGS \$282.75	AVG. SAVINGS \$3,393
PER DAY	PER WEEK	PER MONTH	PER YEAR ³

Above calculations are based on driving an average of 84 miles per day.

Calculate your savings:

http://www.nissanusa.com/leaf-electric-car/savings-calculator?next=model.overview.leaf.savings_calculator.button

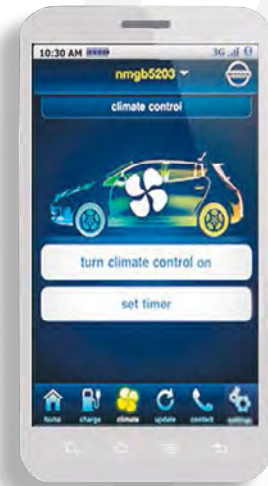


¹U.S. Department of Transportation Federal Highway Administration, 2012. ²2015 EPA range of 84 miles. Actual range may vary. Use for comparison only. ³Your Annual Gas Savings is the result of Daily Savings multiplied by the number of days in the month (30) and the number of months per year (12). Daily Savings is the Nissan LEAF[®] Daily Cost (miles driven daily/Nissan LEAF[®] MPG, multiplied by MPG) subtracted from Daily Cost (miles driven daily/MPG, multiplied by the national average of the cost of gas). Your actual gas savings will vary due to a number of factors, including driving conditions, vehicle maintenance, gas prices in your specific geographic location, and changes in energy costs. ⁴HOV access varies by state. Please consult state laws for eligibility.



TALK TO YOUR LEAF® – IT'S LISTENING.

- find a charging station¹
- get the latest traffic reports³
- learn your drivable distance²
- activate climate control remotely
- start or stop charging
- see how you rank in energy consumption
- check battery status from your phone or computer

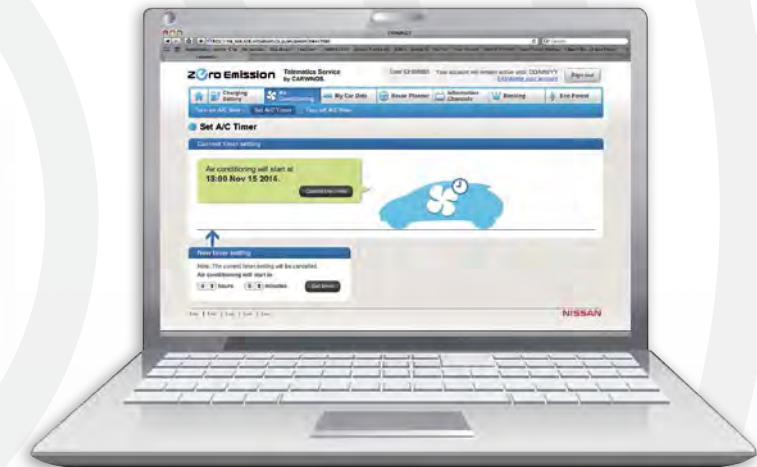


FROM YOUR SMARTPHONE.

With the available CARWINGS® app, you can connect to your LEAF® to start and stop charging, activate climate control, see your driving range and get alerts and updates.⁴



And sometimes LEAF does the talking. For instance, when it sends you a friendly message to let you know it's finished charging. CARWINGS® makes the conversation possible, with a smartphone app that lets you keep in touch with your LEAF® remotely and ask it to do things like start charging or turn the heat on. And when you log on to CARWINGS® on your laptop, you'll discover even more ways to make driving electric easy and fun. Check your phone – that might be your LEAF® calling.⁴



FROM YOUR COMPUTER.

In addition to all that you can do from your phone, log into your CARWINGS® account online to learn your driving history, plan your route and even see how your driving efficiency ranks among other LEAF® owners.⁴



A DASH WITH A WHOLE LOT TO SAY.

Wouldn't you like to see just how much energy you used while driving? LEAF® tells you this and more – everything you need to know about range and energy consumption, all from your dash. So you can get the most out of every charge.

Information Provided by:
DEALER

Nissan LEAF® SV shown in Light Gray Cloth with optional equipment.

LET YOUR CHARGE TAKE YOU FAR.

When you have the right tools, optimized range and conscientious driving comes naturally.

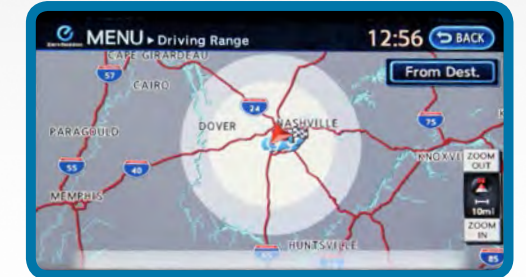
Eco Drive Indicator:

Ever thought of growing your own forest? Watch the virtual trees appear in response to your efficient driving. Happy growing.



Eco Mode:

Switch to Eco Mode for your most efficient power usage. It can help improve range up to 10% in certain conditions, by limiting motor output, increasing regenerative braking and cutting back on climate control.

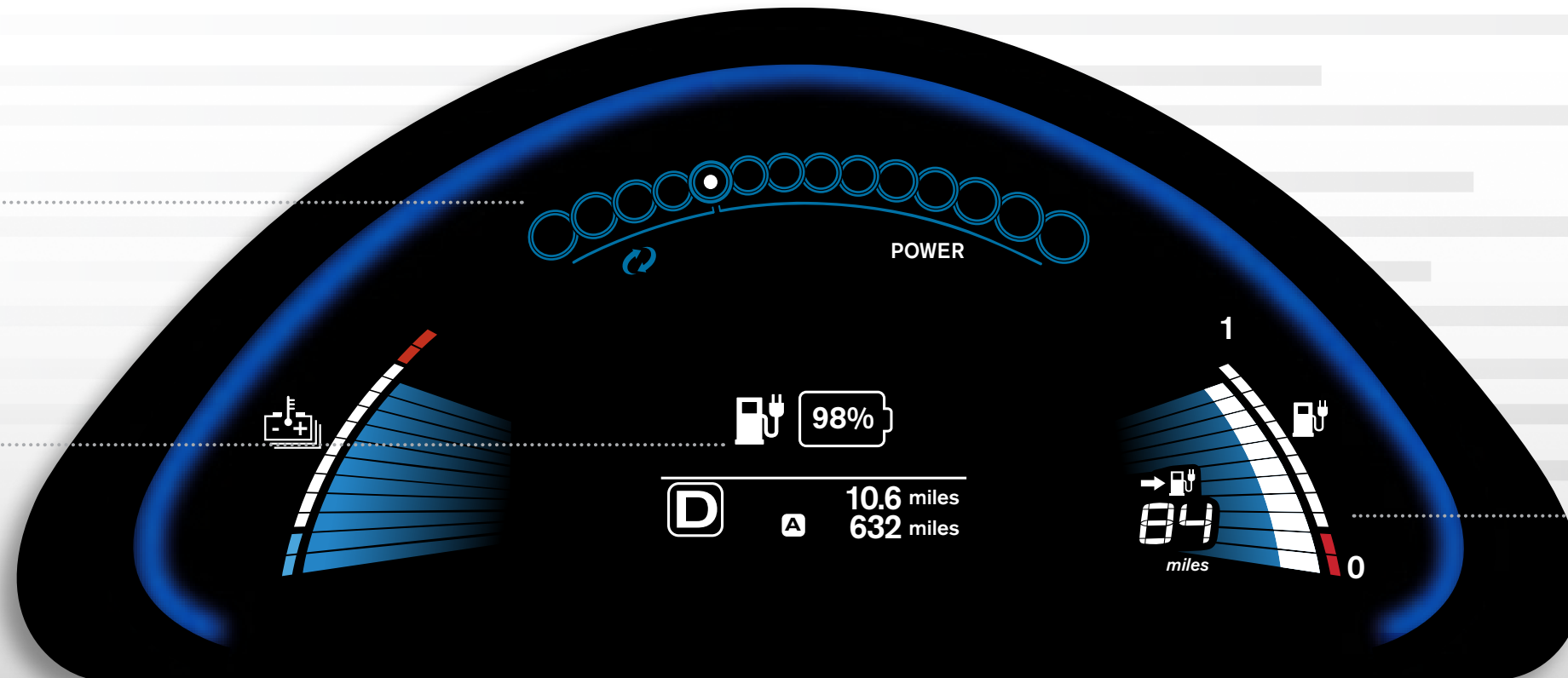


Driving Range and Nearby Charging:

Press the available Zero Emission button to look up the most economical route, see a radius of your driving range and find nearby charging spots.¹

Power Meter:

Keep an eye on your power consumption. Lights tracking left or right show how much power you're using – or generating, thanks to LEAF's regenerative braking system.

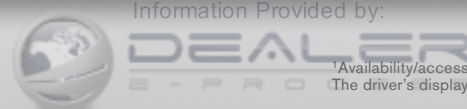


Remaining Battery Charge:

You'll always know exactly how your battery is doing. Which means you'll always know when it's time to start or schedule charging.

Estimated Range:

How many miles remain in your driving range? Easy – this meter updates regularly based on your power usage and driving style.²



¹Availability/accessibility of charging stations not guaranteed. ²Mileage estimates only. Range will vary depending upon driving/charging habits, speed, conditions, weather, temperatures, and battery age. The driver's display shown does not show default screen settings.

ONE SCREEN DOES IT ALL.

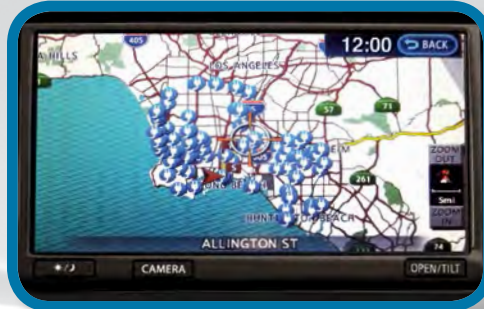


Click to see a short video on the thoughtful technology available on the LEAF. Or go to bit.ly/leaftechnology15

Bluetooth



Access the available Nissan Navigation System, Zero Emission menu, and audio options all in one place. Manage your driving range, calculate routes and get real-time traffic updates.^{1,2,3}



Zero Emission Menu.
Get the most economical route and points of interest, see your driving range and nearby charging spots.⁴



Energy usage screen.
See how much energy you're using, including the effects of using climate control. View driving habits and history.



Streaming audio via Bluetooth.
Your friends can DJ from any Bluetooth-enabled audio device.⁵



iPod/USB input with dash display.
Listen to your own playlists and favorite podcasts.⁶



Pandora radio compatibility.
Connect your Pandora-equipped iPhone through the USB input to choose playlists and rate songs right on your dash display.⁶



Hands-free text messaging assistant.
A safer way to stay in touch. Press a button to have texts read to you, then answer with pre-loaded responses. All via voice recognition.⁷

¹Never program while driving. GPS mapping may not be detailed in all areas or reflect current road status. ²Mileage estimates only. Range will vary depending upon driving/charging habits, speed, conditions, weather, temperatures, and battery age. ³Required SiriusXM® Satellite Radio, NavTraffic® and NavWeather® subscriptions sold separately after trial period. Installation costs, one-time activation fee, other fees and taxes will apply. NavTraffic® available in select markets. Services available only to those 18 or older in the 48 contiguous states and D.C. Fees and programming subject to change. Subscriptions governed by Customer Agreement available at siriusxm.com. ©2014 Sirius XM Radio Inc. ⁴Sirius, XM® and all related marks and logos are trademarks of Sirius XM Radio Inc. ⁵Availability/accessibility of charging stations not guaranteed. ⁶Availability of specific features is dependent upon the phone's Bluetooth® support. Please refer to your phone Owner's Manual for details. Bluetooth® word mark and logos are owned by Bluetooth SIG, Inc., and any use of such marks by Nissan is under license. ⁷Driving is serious business and requires your full attention. If you have to use the connected device while driving, exercise extreme caution at all times so full attention may be given to vehicle operation. iPod® and iPhone® are registered trademarks of Apple, Inc. All rights reserved. iPod® and iPhone® not included. ⁸Use the text messaging feature after stopping your vehicle in a safe location. If you have to use the feature while driving, exercise extreme caution at all times so full attention may be given to vehicle operation. Compatible smartphone required. Standard text rates and/or data usage may apply. Pandora® is a registered trademark of Pandora Media, Inc. Please refer to Features and Specifications for availability of all the features shown here.

**NISSAN AROUND VIEW® MONITOR:
INNOVATION THAT
SEES THE BIG PICTURE.**



How often have you wished that parallel parking was easier?

A standard RearView Monitor is great when backing up¹ – but when it comes to parking, it's nice to see more than just what's directly behind you. That's why LEAF[®] offers the available Around View[®] Monitor.¹ Four cameras give you a virtual 360° bird's-eye view of your vehicle, with selectable split-screen close-ups of the front, rear, and curbside views, so you can get a better look.² Now that's smart.

RIGHT ON THE NOSE

In Drive, the display gives you both a front and overhead view, so you know just how far to pull up – without going too far.

COMPLETE THE PICTURE

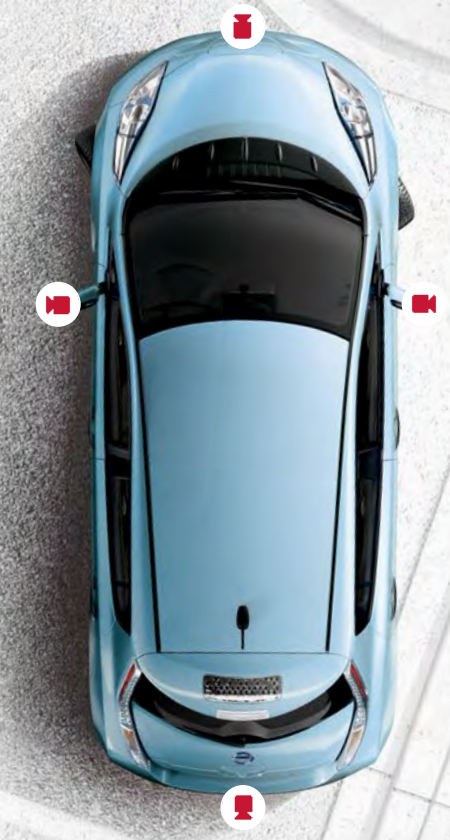
Located under your driver's side mirror, this camera helps round out your virtual 360° bird's-eye view, whether you're in Drive or Reverse.²

SPARE YOUR WHEELS

In Drive or Reverse, you can push the camera button to switch out the overhead for a side view. A great help for seeing how close you are to the curb.

LOOK OUT BELOW

In Reverse, the display helps you see what's directly behind you, while the overhead view helps with shorter objects otherwise hidden below your window.



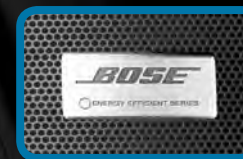
Information Provided by:
DEALER

¹Parking aid/convenience feature. Cannot completely eliminate blind spots. May not detect every object and does not warn of moving objects. Always check surroundings and turn to look behind you before moving vehicle.
²Virtual composite 360° view. Available on SV or SL Premium Package.

LOOKS GOOD, SOUNDS GOOD, FEELS GOOD.

Power up your LEAF[®] with the push-button start, and you're greeted with an ambient start-up sound. And when you take a look around, you'll find high-tech features you'd expect from a vehicle this innovative, like a Nissan Navigation System and Pandora.^{®1} A RearView Monitor, Bluetooth[®], iPod[®] connectivity, heated front and rear seats and a heated steering wheel come standard, too.^{2,3,4} Your travels are even easier, with available hands-free text messaging assistant⁵ and Voice Destination Entry. Of course, you'll also find the essentials for comfort and ease, like an illuminated glove compartment, generous cup holders and smart storage throughout. Available black leather-appointed seats are a sleek touch to top it off.

choose from 3 unique start-up sounds
Press to Hear



Enjoy the amazing sound quality of an available energy-efficient Bose[®] audio system. Bose[®] came on board with a design that reduces energy usage by nearly 50%. Ultra-lightweight and compact, this speaker system is custom-tuned for LEAF's[®] interior acoustics to give you the concert hall sound for which Bose[®] is famous.

NOW, YOU DON'T HAVE TO SACRIFICE SPACE FOR EFFICIENCY.

In the LEAF,[®] you get double the trunk space of a Chevy Volt,[®] with nearly 24 cubic feet.¹ That's up to five pieces of luggage or two golf bags, while still fitting your friends in back. Convenient 60/40 split folding rear seats can give you an additional six cubic feet of space, providing plenty of cargo options. Five doors and a roomy interior makes for easy coming, going, loading and unloading.²

5 PIECES OF CARRY-ON LUGGAGE



2 GOLF BAGS



1 FULL-SIZE ADULT BIKE



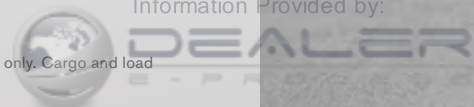
3 LARGE COOLERS



Click the button to see a short video on the useful versatility that's inside the Nissan LEAF.[®] Or go to bit.ly/leafcargo15



¹Trunk size information based on manufacturer's website. 2015 LEAF[®] versus 2014 Chevy Volt. Chevy Volt[®] is a registered trademark of General Motors LLC. ²Cargo shown for display purposes only. Cargo and load capacity limited by weight and distribution. Always secure all cargo.



NISSAN SAFETY SHIELD® PHILOSOPHY

INNOVATION THAT LOOKS OUT FOR YOU.

Wouldn't it be cool if you had the confidence you need for every part of your drive? The Nissan Safety Shield® is a comprehensive approach to safety that guides the engineering and development of every vehicle we make.

MONITOR

Smart technologies are designed to help monitor conditions. Like a standard rearview camera that helps you see something directly behind you when in Reverse, or a system that helps ensure you're travelling on properly inflated tires.

Tire Pressure Monitoring System with Available Easy-Fill Tire Alert.^{1,2}

Lets you know when a tire is low. And Easy-Fill Tire Alert takes the guesswork out of filling your tires, with a beep of the horn when you've reached the correct pressure.

Available Around View® Monitor³ RearView Monitor³

RESPOND

Whether you need to hit the brakes hard or maneuver around an unexpected obstacle, these standard technologies help you respond to a potentially harmful situation.

Vehicle Dynamic Control helps you maintain your steered path.⁴

Traction Control System helps reduce wheelspin in low-traction situations.

Anti-lock Braking System helps you maintain steering control around obstacles while braking heavily.

Electronic Brake force Distribution sends extra force to the rear brakes when you have additional weight of passengers or cargo in the back.

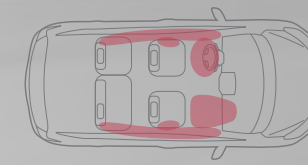
Brake Assist helps apply maximum braking force if it detects hard braking and senses you are in an emergency situation.⁵

PROTECT

When a collision is unavoidable, Nissan's Zone Body construction helps absorb the impact while the advanced seat belt and air bag systems help protect passengers. The battery is encased within a triple-protection structure system to help it stay intact.

Six Standard Airbags⁶

LATCH System (Lower Anchors and Tethers for Children)



6 Standard Airbags.⁶ Nissan Advanced Air Bag System has dual-stage supplemental front air bags with seat belt and occupant-classification sensors,⁶ front seat-mounted side-impact supplemental air bags,⁶ and roof-mounted curtain side-impact supplemental air bags.⁶



Available Around View® Monitor.³ Lets you get the big picture with four cameras to help you maneuver more safely.

snug-kids. Nissan safety engineers have dedicated thousands of hours to evaluating hundreds of child restraints in Nissans. The result: an industry first, The Snug Kids® Child Safety Seat Fit Guide. This guide lists child seats that fit the rear seats of Nissan vehicles, as well as offers invaluable tips on correct installation. Look for the latest Fit Guide at NissanUSA.com/SnugKids.



Click the button to see a short video on how Snug Kids® helps you find the right CRS for your Nissan. Or go to bit.ly/NissanSnugKids



Information Provided by

DEAL

¹TPMS is not a substitute for regular tire pressure checks. ²Vehicle must be on for the Easy-Fill Tire Alert to operate. ³Parking aid/convenience feature. Cannot completely eliminate blind spots. May not detect every object and does not warn of moving objects. Always check surroundings and turn to look behind you before moving vehicle. ⁴VDC, which should remain on when driving except when freeing the vehicle from mud or snow, cannot prevent accidents due to abrupt steering, carelessness, or dangerous driving techniques. ⁵Brake Assist is only an aid to assist the driver and is not a collision warning or avoidance device. It is the driver's responsibility to stay alert, drive safely, and be in control of the vehicle at all times. ⁶Air bags are only a supplemental restraint system; always wear your seat belt. Even with the occupant-classification sensor, rear-facing child restraints should not be placed in the front-passenger's seat. All children 12 and under should ride in the rear seat properly secured in child restraints, booster seats, or seat belts according to their size. Air bags will only inflate in certain accidents; see your Owner's Manual for more details. Inflated air bags shown for illustration purposes only, actual coverage area may differ. Air bags deflate after deployment.

Click the button to see short videos on
Genuine Nissan Accessories in action.
Or go to bit.ly/leaf_gnavideos



GENUINE NISSAN ACCESSORIES.

Every Genuine Nissan Accessory is custom-fit, custom-designed and durability-tested. Each one is backed by Nissan's 3-year/36,000-mile (whichever occurs first) limited warranty (if installed by dealer at the time of purchase),¹ and can be financed when installed by dealer at time of purchase.

A. Holographic Kick Plates (2-piece set)

For a grand entry every time.

B. Rear Cargo Cover²

No one outside needs to know what's in there.

C. Sorona[®] Carpeted Floor Mats³

Made of renewably sourced fiber, ready to protect your carpeting.

D. All-season Molded Floor Protectors

Neither sleet, snow nor mud shall mess up your ride.

E. Clear Charging Port Protector

Keep your port in top condition, even with everyday charging.

F. Rear Bumper Protector

Scratches? What scratches?

G. Carpeted Cargo Mat²

The plush way to protect.

H. Cargo Organizer²

Indulge your inner neat freak.

Additional Accessories:

- Splash Guards
- Cargo Net
- Recycling and Shopping Bags
- Nose Mask
- Vehicle Cover
- And More

IT'S UNIQUE. NOW MAKE IT YOU.

For more information and to shop online for LEAF[®] Genuine Nissan Accessories, go to bit.ly/leaf_estore



Nissan LEAF[®] SL shown with Nose Mask, Zero Emission Body Design Graphics and Splash Guards.



Information Provided by:

DEAL
E-PRO

¹Genuine Nissan Accessories are covered by Nissan's Limited Warranty on Genuine Nissan Replacement Parts, Genuine NISMO[®] S-Tune Parts, and Genuine Nissan Accessories for the longer of 12 months/12,000 miles (whichever occurs first) or the remaining period under the 3-year/36,000-mile (whichever occurs first) Nissan New Vehicle Limited Warranty. Terms and conditions apply. See Warranty Information Booklet for details. ²Cargo and load capacity limited by weight and distribution. Always secure all cargo. ³Sorona[®] contains 37% annually renewable plant based ingredients by weight (28% bio-based carbon). Sorona[®] is a registered trademark of E. I. du Pont de Nemours and Company.

CHOOSE YOUR TRIM LEVEL

S

- 80 kW AC synchronous electric motor
- 24 kWh lithium-ion (Li-ion) battery
- Zero Emissions Vehicle (ZEV)
- 16" Steel wheels with wheel covers
- B-mode (regenerative braking drive mode)
- Vehicle Dynamic Control (VDC)¹ with Traction Control System (TCS)
- Portable opportunity-charge cable
- Charge port light and lock
- RearView Monitor²
- Nissan Intelligent Key[®] with Push Button Start
- Heated front and rear seats
- Heated leather-wrapped steering wheel
- Steering wheel-mounted cruise control
- Automatic Temperature Control (ATC)
- 60/40 Split fold-down rear seats with rear seat heater ducts
- Bluetooth[®] Hands-free Phone System³
- AM/FM/CD audio system with four speakers
- USB connection port for iPod[®] and other compatible devices⁴
- Rear spoiler
- Six standard air bags⁵
- Tire Pressure Monitoring System (TPMS) with Easy-Fill Tire Alert^{6,7}

KEY AVAILABLE PACKAGE: Charge Package



SV INCLUDES S EQUIPMENT PLUS:

- 6.6 kW onboard charger
- Nissan Navigation System with 7" touch-screen monitor⁸
- NavTraffic[®] and NavWeather[®] provided by SiriusXM⁹
- Hands-free text messaging assistant¹⁰
- Voice Destination Entry
- CARWINGS[®]: allowing for remote connection to vehicle¹¹
- Six speakers
- Pandora[®] radio capability (iPhone[®] only)
- 17" Aluminum-alloy wheels
- Hybrid heater system
- Auto-dimming rearview mirror
- Partially recycled light gray cloth seats¹³
- Passenger seatback map pocket

KEY AVAILABLE PACKAGES:

- LED Headlights and Quick Charge Port Package
- Premium Package



SL INCLUDES SV EQUIPMENT PLUS:

- Quick charge port
- Leather-appointed seats
- Aerodynamic LED low-beam headlights
- Automatic on/off headlights
- Fog lights
- HomeLink[®] Universal Transceiver
- Photovoltaic solar-panel rear spoiler
- Cargo cover

KEY AVAILABLE PACKAGE: Premium Package



CHOOSE A PACKAGE

S Charge Package

- 6.6 kW onboard charger
- Quick charge port



SV LED Headlights and Quick Charge Port Package

- Quick charge port
- Aerodynamic LED low-beam headlights
- Automatic on/off headlights
- Fog lights



Premium Package (SV, SL)

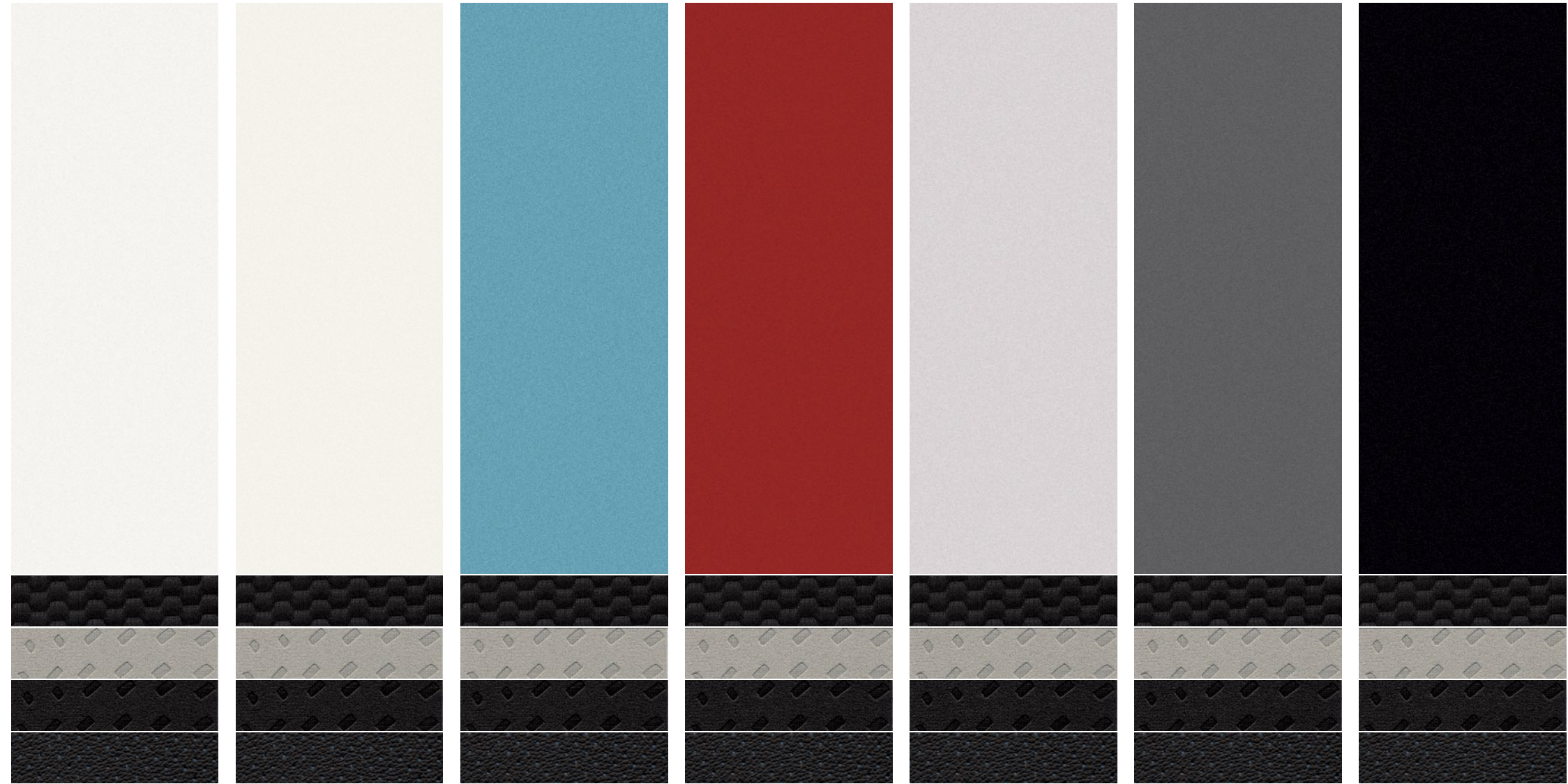
- Around View[®] Monitor²
- Bose[®] audio system with AM/FM/CD and seven speakers



¹VDC, which should remain on when driving except when freeing the vehicle from mud or snow, cannot prevent accidents due to abrupt steering, carelessness, or dangerous driving techniques. ²Parking aid/convenience feature. Cannot completely eliminate blind spots. May not detect every object and does not warn of moving objects. Always check surroundings and turn to look behind you before moving vehicle. ³Availability of specific features is dependent upon the phone's Bluetooth[®] support. Please refer to your phone Owner's Manual for details. Bluetooth[®] word mark and logos are owned by Bluetooth SIG, Inc., and any use of such marks by Nissan is under license. ⁴Driving is serious business and requires your full attention. If you have to use the connected device while driving, exercise extreme caution at all times so full attention may be given to vehicle operation. iPod[®] is a registered trademark of Apple, Inc. All rights reserved. iPod[®] not included. ⁵Air bags are only a supplemental restraint system; always wear your seat belt. Even with the occupant-classification sensor, rear-facing child restraints should not be placed in the front-passenger's seat. All children 12 and under should ride in the rear seat properly secured in child restraints, booster seats, or seat belts according to their size. Air bags will only inflate in certain accidents; see your Owner's Manual for more details. ⁶TPMS is not a substitute for regular tire pressure checks. ⁷Vehicle must be on for the Easy-Fill Tire Alert to operate. ⁸Never program while driving. GPS mapping may not be detailed in all areas or reflect current road status. ⁹Required SiriusXM[®] Satellite Radio, NavTraffic[®] and NavWeather[®] subscriptions sold separately after trial period. Installation costs, one-time activation fee, other fees and taxes will apply. NavTraffic available in select markets. Services available only to those 18 or older in the 48 contiguous states and D.C. Fees and programming subject to change. Subscriptions governed by Customer Agreement available at siriusxm.com. ©2014 Sirius XM Radio Inc. Sirius[®], XM[®] and all related marks and logos are trademarks of Sirius XM Radio Inc. ¹⁰Use the text messaging feature after stopping your vehicle in a safe location. If you have to use the feature while driving, exercise extreme caution at all times so full attention may be given to vehicle operation. Compatible smartphone required. Standard text rates and/or data usage may apply. ¹¹CARWINGS[®] requires compatible 2G GSM/GPRS cellular network provided by AT&T. 2G cellular network not available in all areas and/or available at all times. Cellular technology is evolving, and changes to cellular networks provided by independent companies are not within Nissan's control. AT&T has announced that on December 31, 2016, AT&T will terminate 2G network availability. Like other devices that rely on 2G network coverage, once the 2G network is terminated, CARWINGS[®] will not function unless equipment replacements, upgrades, or alternative 2G network coverage are available at that time, which Nissan cannot guarantee. Nissan not responsible for associated costs that may be required for continued CARWINGS[®] operation due to cellular network termination (including equipment upgrades, if available, or roaming charges on alternative networks). Certain remote functions require compatible smartphone, not included with vehicle. CARWINGS[®] subscription service requires owner consent to activate and may require purchase. See dealer for details. Standard text rates and/or data usage may apply to CARWINGS[®] communications received by email or SMS/text message. Terms and conditions of Subscription Agreement apply. ¹²17" wheels available for SV trim August 2014. ¹³Post-consumer recycled materials will exceed 30%. Bose[®] is a registered trademark of The Bose Corporation. Google[®] is a registered trademark of Google Inc. HomeLink[®] is a registered trademark of Johnson Controls Technology Company. iPhone[®] is a registered trademark of Apple, Inc. All rights reserved. iPhone[®] not included. Pandora[®] is a registered trademark of Pandora Media.

CHOOSE YOUR COLOR

You've decided which LEAF® you want, now here comes the fun part: deciding what it's going to look like. Choose your favorite color and then pick from the available interiors based on the model of your choice.



Glacier White QAK Pearl White QAB¹ MorningSky Blue RBE Cayenne Red NAH Brilliant Silver K23 Gun Metallic KAD Super Black KH3

S SV SL S SV SL S SV SL S SV SL S SV SL S SV SL

BLACK CLOTH	■		
LIGHT GRAY CLOTH		■	
BLACK LEATHER			■

BLACK CLOTH	■		
LIGHT GRAY CLOTH		■	
BLACK LEATHER			■

BLACK CLOTH	■		
LIGHT GRAY CLOTH		■	
BLACK LEATHER			■

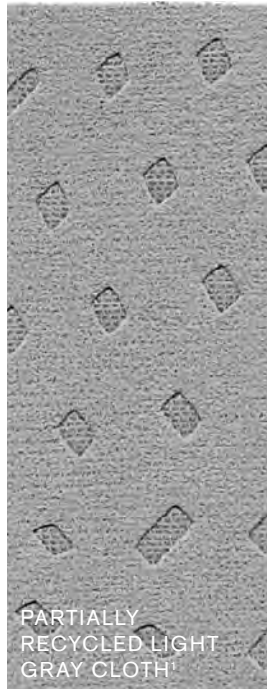
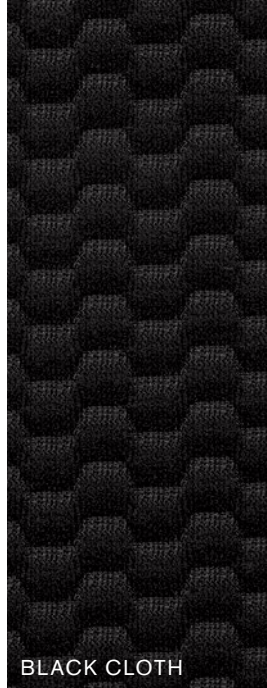
BLACK CLOTH	■		
LIGHT GRAY CLOTH		■	
BLACK LEATHER			■

Nissan has taken care to ensure that the color swatches presented here are the closest possible representations of actual vehicle colors. Swatches may vary slightly due to viewing light or screen quality. Please see the actual colors at your local Nissan dealer.

■ Standard
¹Extra Cost Option



CHOOSE YOUR FABRIC



¹Post-consumer recycled material will exceed 30%.

SPECIFICATIONS

Electric Motor	S	SV	SL
80 kW AC synchronous electric motor	■	■	■
24 kWh lithium-ion (Li-ion) battery	■	■	■
3.6 kW onboard charger	■		
6.6 kW onboard charger	■ ^c	■	■
Battery heater	■	■	■
Hybrid heater system		■	■
Emissions – Zero Emissions Vehicle (ZEV)	■	■	■
Portable opportunity-charge cable (110–120 V)	■	■	■
Normal charge port	■	■	■
Quick charge port	■ ^c	■ ^L	■

Drivetrain	S	SV	SL
Single-speed reduction gear	■	■	■
Palm-shift drive selector	■	■	■
Hill start assist	■	■	■

Brakes	S	SV	SL
Front and rear vented disc brakes	■	■	■
Regenerative braking system	■	■	■
B-mode (enhanced regenerative braking drive mode)	■	■	■
4-wheel Anti-lock Braking System (ABS)	■	■	■
Electronic Brake force Distribution (EBD)	■	■	■
Brake Assist	■	■	■

Suspension/Steering	S	SV	SL
Independent strut front suspension with coil springs	■	■	■
Torsion bar axle rear suspension with coil springs	■	■	■
Front and rear stabilizer bars	■	■	■
Vehicle-speed-sensitive electric power steering	■	■	■

Wheels/Tires	S	SV	SL
16" Steel wheels	■		
17" 5-spoke aluminum-alloy wheels		■	■
Tire repair kit	■	■	■

■ Standard

■^P Part of Premium Package (SV, SL)

■^c Part of S Charge Package

■^L Part of SV LED Headlights and Quick Charge Port Package

Exterior Features	S	SV	SL
Aerodynamic LED low-beam headlights		■ ^L	■
Aerodynamic halogen headlights	■	■	
Automatic on/off headlights		■ ^L	■
Fog lights		■ ^L	■
Photovoltaic solar-panel rear spoiler			■
Rear spoiler	■	■	
Body-color front and rear bumpers	■	■	■
Chrome door handles	■	■	■
Unique Zero Emission exterior badging	■	■	■
Aerodynamic underbody cover and rear diffuser	■	■	■
Dual power body-color heated outside mirrors	■	■	■
Front UV-reducing solar glass	■	■	■
Charge port with light and lock	■	■	■
One-touch rear hatch release	■	■	■

Comfort/Convenience	S	SV	SL
Nissan Navigation System with 7" QVGA color monitor ¹		■	■
NavTraffic [®] and NavWeather [®] with 3-month trial subscription provided by SiriusXM ^{®2}		■	■
Hands-free text messaging assistant ³		■	■
Voice Destination Entry		■	■
RearView Monitor ⁴	■	■	■
Around View [®] Monitor ⁴		■ ^P	■ ^P
Nissan Intelligent Key [®] with Push Button Start	■	■	■
Bluetooth [®] Hands-free Phone System ⁵	■	■	■
HomeLink [®] Universal Transceiver			■
CARWINGS ^{®6} allowing for remote connection to vehicle: _ Monitor battery state of charge/charging status _ Start vehicle charging _ Activate heating and air conditioning systems		■	■
Automatic Temperature Control (ATC)	■	■	■
Trip computer	■	■	■
Power door locks with auto-locking feature	■	■	■
Power windows with driver's one-touch auto-up/down feature	■	■	■

Comfort/Convenience (continued)	S	SV	SL
Auto-dimming rearview mirror		■	■
Tilt steering column	■	■	■
Cruise control with steering wheel-mounted controls	■	■	■
Variable intermittent windshield wipers	■	■	■
Rear intermittent wiper with washer	■	■	■
Center console storage	■	■	■
Rear window defroster	■	■	■
Two front map lights	■	■	■
Front door pockets	■	■	■
Passenger's seatback pocket		■	■
Sun visors with vanity mirrors and extensions	■	■	■
Front and rear assist grips	■	■	■
Two cup holders	■	■	■
Four bottle holders – front and rear door panels	■	■	■
Glove compartment	■	■	■
Front center armrest with storage	■	■	■
Remote charge door release	■	■	■
Cargo cover			■
Auxiliary 12-volt DC power outlet	■	■	■

Seating/Appointments	S	SV	SL
Heated front and rear seats	■	■	■
6-way manual adjustable driver's seat	■	■	■
4-way manual adjustable front passenger's seat	■	■	■
Cloth seat trim	■		
Partially recycled cloth seat trim ⁷		■	
Leather-appointed seats			■
Heated leather-wrapped steering wheel	■	■	■
60/40 Split fold-down rear seats	■	■	■
Rear seat heating and cooling ducts	■	■	■

¹Never program while driving. GPS mapping may not be detailed in all areas or reflect current road status. ²Required SiriusXM[®] Satellite Radio, NavTraffic[®] and NavWeather[®] subscriptions sold separately after trial period. Installation costs, one-time activation fee, other fees and taxes will apply. NavTraffic[®] available in select markets. Services available only to those 18 or older in the 48 contiguous states and D.C. Fees and programming subject to change. Subscriptions governed by Customer Agreement available at siriusxm.com. ©2014 Sirius XM Radio Inc. Sirius[®], XM[®] and all related marks and logos are trademarks of Sirius XM Radio Inc. ³Use the text messaging feature after stopping your vehicle in a safe location. If you have to use the feature while driving, exercise extreme caution at all times so full attention may be given to vehicle operation. Compatible smartphone required. Standard text rates and/or data usage may apply. ⁴Parking aid/convenience feature. Cannot completely eliminate blind spots. May not detect every object and does not warn of moving objects. Always check surroundings and turn to look behind you before moving vehicle. ⁵Availability of specific features is dependent upon the phone's Bluetooth[®] support. Please refer to your phone Owner's Manual for details. Bluetooth[®] word mark and logos are owned by Bluetooth SIG, Inc., and any use of such marks by Nissan is under license. ⁶CARWINGS[®] requires compatible 2G GSM/GPRS cellular network provided by AT&T. 2G cellular network not available in all areas and/or available at all times. Cellular technology is evolving, and changes to cellular networks provided by independent companies are not within Nissan's control. AT&T has announced that on December 31, 2016, AT&T will terminate 2G network availability. Like other devices that rely on 2G network coverage, once the 2G network is terminated, CARWINGS[®] will not function unless equipment replacements, upgrades, or alternative 2G network coverage are available at that time, which Nissan cannot guarantee. Nissan not responsible for associated costs that may be required for continued CARWINGS[®] operation due to cellular network termination (including equipment upgrades, if available, or roaming charges on alternative networks). Certain remote functions require compatible smartphone, not included with vehicle. CARWINGS[®] subscription service requires owner consent to activate and may require purchase. See dealer for details. Standard text rates and/or data usage may apply to CARWINGS[®] communications received by email or SMS/text message. Terms and conditions of Subscription Agreement apply. ⁷Post-consumer recycled material will exceed 30%. ⁸Driving is serious business and requires your full attention. If you have to use the connected device while driving, exercise extreme caution at all times so full attention may be given to vehicle operation. iPod[®] is a registered trademark of Apple, Inc. All rights reserved. iPod[®] not included. ⁹Air bags are only a supplemental restraint system; always wear your seat belt. Even with the occupant-classification sensor, rear-facing child restraints should not be placed in the front-passenger's seat. All children 12 and under should ride in the rear seat properly secured in child restraints, booster seats, or seat belts according to their size. Air bags will only inflate in certain accidents; see your Owner's Manual for more details. ¹⁰VDC, which should remain on when driving except when freeing the vehicle from mud or snow, cannot prevent accidents due to abrupt steering, carelessness, or dangerous driving techniques. ¹¹TPMS is not a substitute for regular tire pressure checks. ¹²Vehicle must be on for the Easy-Fill Tire Alert to operate. Bose[®] is a registered trademark of The Bose Corporation. HomeLink[®] is a registered trademark of Johnson Controls Technology Company. iPhone[®] is a registered trademark of Apple, Inc. All rights reserved. iPhone[®] not included. Pandora[®] is a registered trademark of Pandora Media.

SPECIFICATIONS (CONTINUED)

Audio/Entertainment	S	SV	SL
AM/FM/CD audio system with 4.3" QVGA color monitor	■		
AM/FM/CD audio system with 7" QVGA color monitor		■	■
Bose® audio system with AM/FM/CD		P	P
MP3/WMA CD playback capability	■	■	■
Four speakers	■		
Six speakers		■	■
Seven speakers		P	P
SiriusXM® Satellite Radio with 3-month trial subscription ²	■	■	■
Auxiliary audio input jack ⁸	■	■	■
USB connection port for iPod® interface and other compatible devices ⁸	■	■	■
Pandora® radio compatibility for iPhone®		■	■
Steering wheel-mounted audio controls	■	■	■

Safety/Security	S	SV	SL
Nissan Advanced Air Bag System(AABS) with dual-stage supplemental front air bags with seat belt and occupant-classification sensors ⁹	■	■	■
Driver and front-passenger seat-mounted side-impact supplemental air bags ⁹	■	■	■
Roof-mounted curtain side-impact supplemental air bags for front and rear-seat outboard occupant head protection ⁹	■	■	■
Vehicle Dynamic Control (VDC) ¹⁰	■	■	■
Traction Control System (TCS)	■	■	■
3-point seat belts for all seating positions	■	■	■
ALR/ELR seat belt system for all passenger seating positions (ELR for driver's seat)	■	■	■
Front seat belts with pretensioners and load limiters	■	■	■
Front-seat height-adjustable head restraints	■	■	■
Rear-seat height-adjustable headrests	■	■	■
LATCH System (Lower Anchors and Tethers for CHildren)	■	■	■
Child-safety rear door locks	■	■	■
Zone Body construction with front and rear crumple zones	■	■	■
Energy-absorbing steering column	■	■	■
Pipe-style steel side-door guard beams	■	■	■
Tire Pressure Monitoring System (TPMS) with Easy-Fill Tire Alert ^{11, 12}	■	■	■
Nissan Vehicle Immobilizer System	■	■	■
Vehicle Security System	■	■	■

PACKAGES

C S Charge Package
6.6 kW onboard charger (6 kW output)
Quick charge port

L SV LED Headlights and Quick Charge Port Package
Quick charge port
Aerodynamic LED low-beam headlights
Automatic on/off headlights
Fog lights

P Premium Package (SV, SL)
Around View® Monitor ⁴
Bose® audio system with AM/FM/CD and seven speakers

DIMENSIONS/CAPACITIES/WEIGHTS/MPGe

Dimensions – Inches

Exterior	
Wheelbase	106.3
Overall length	175.0
Overall width	69.7
Overall height	61.0
Track width (front/rear)	60.6/60.4

Aerodynamics – Cd	
Drag coefficient	0.28

Interior (front/rear)			
Head room	41.2/37.3	Hip room	51.7/50.0
Leg room	42.1/33.3	Shoulder room	54.3/52.5

Capacities

Seating capacity	5
EPA interior passenger volume (cu. ft.)	92.4
Total interior volume (cu. ft.)	116.0
Cargo volume with rear seat up (cu. ft.)	23.6
Cargo volume with rear seat down (cu. ft.)	30.0

Curb Weights – Lbs.

	S	SV	SL
Base total	3,243	3,276	3,328

2015 EPA Fuel Economy Estimates

City/Highway/Combined MPGe	S	SV	SL
Electric motor	126/101/114	126/101/114	126/101/114

Actual mileage may vary with driving conditions — use for comparison only.



BUYING/OWNING



Nissan Motor Acceptance Corporation. Whether you're buying or leasing, you'll find attractive rates and flexible terms to make your purchase more accessible.

College Grad Program. Ask about our special new vehicle pricing available to individuals up to two years after graduation.

Active and Reserve US Military Program. Ask about eligibility for our fixed discount on new vehicle pricing available to those serving our country.

New Vehicle Limited Warranties. Protection for your new Nissan includes 3-year/36,000-mile (whichever occurs first) basic coverage and 5-year/60,000-mile (whichever occurs first) powertrain coverage. Terms, conditions and exclusions apply. See Warranty Information Booklet for complete details.

Security+Plus® For additional peace of mind, a variety of extended service plans lets you tailor the coverage to your driving habits.

Maintenance+Plus® This extended plan ensures your Nissan will receive up to 17 different services and over 33 different inspection items at each visit, using the most up-to-date diagnostic equipment available.

Genuine Nissan Parts. When it comes time for service, any necessary replacement parts will be made using Genuine Nissan new or remanufactured parts, or Nissan-approved parts. And they're the only parts to carry Nissan's factory-backed limited warranty.

Nissan Mobility Assist. This program offers reimbursements toward the purchase and installation of certain mobility assistance products for program-eligible Nissans. Go to NissanUSA.com/mobility for more info.

Nissan's environmental action plan focuses on several key areas. Increasing production of Zero Emission vehicles, including the 100% electric LEAF.® Improving fuel efficiency through our PUREDRIVE™ measures. And reducing the environmental impact of manufacturing, as seen at our energy-efficient, low-emissions paint plant in Tennessee.

For more information, log on to NissanUSA.com/green



Follow us:  @NissanSupport

At NissanUSA.com, you'll find virtual product demonstrations, a way to "build your own Nissan," a dealer locator, and more information about key Nissan support services. Or if you'd prefer, call **1-800-NISSAN-3** for answers to specific questions about LEAF® or any other Nissan vehicle. The Nissan names, logos, product names, feature names, and slogans are trademarks owned by or licensed to Nissan Motor Co. Ltd. and/or its North American subsidiaries. **Always wear your seat belt, and please don't drink and drive.** ©2014 Nissan North America, Inc.

This brochure is intended for general descriptive and informational purposes only. It is subject to change and does not constitute an offer, representation or warranty (express or implied) by Nissan North America, Inc. Interested parties should confirm the accuracy of any information in this brochure as it relates to a vehicle directly with Nissan North America, Inc., before relying on it to make a purchase decision. Nissan North America, Inc., reserves the right to make changes, at any time, without prior notice, in prices, colors, materials, equipment, specifications, and models and to discontinue models or equipment. Due to continuous product development and other pre- and post-production factors, actual vehicle, materials and specifications may vary from this brochure. Some vehicles shown with optional equipment. See the actual vehicle for complete accuracy. Availability and delivery times for particular models or equipment may vary. Specifications, options and accessories may differ in Hawaii, U.S. territories and other countries. For additional information on availability, options or accessories, see your Nissan dealer or contact Nissan North America, Inc.

Sign up for the latest news and updates on the 2015 Nissan LEAF.®

or visit NissanUSA.com/LEAF

Los folletos de Nissan también están disponibles en español.

Para descargar el PDF, visita:

NissanUSA.com/folletos-espanol

And follow Nissan on:



Facebook® is a registered trademark of Facebook, Inc. Twitter® is a registered trademark of Twitter, Inc. YouTube® is a registered trademark of Google Inc.